

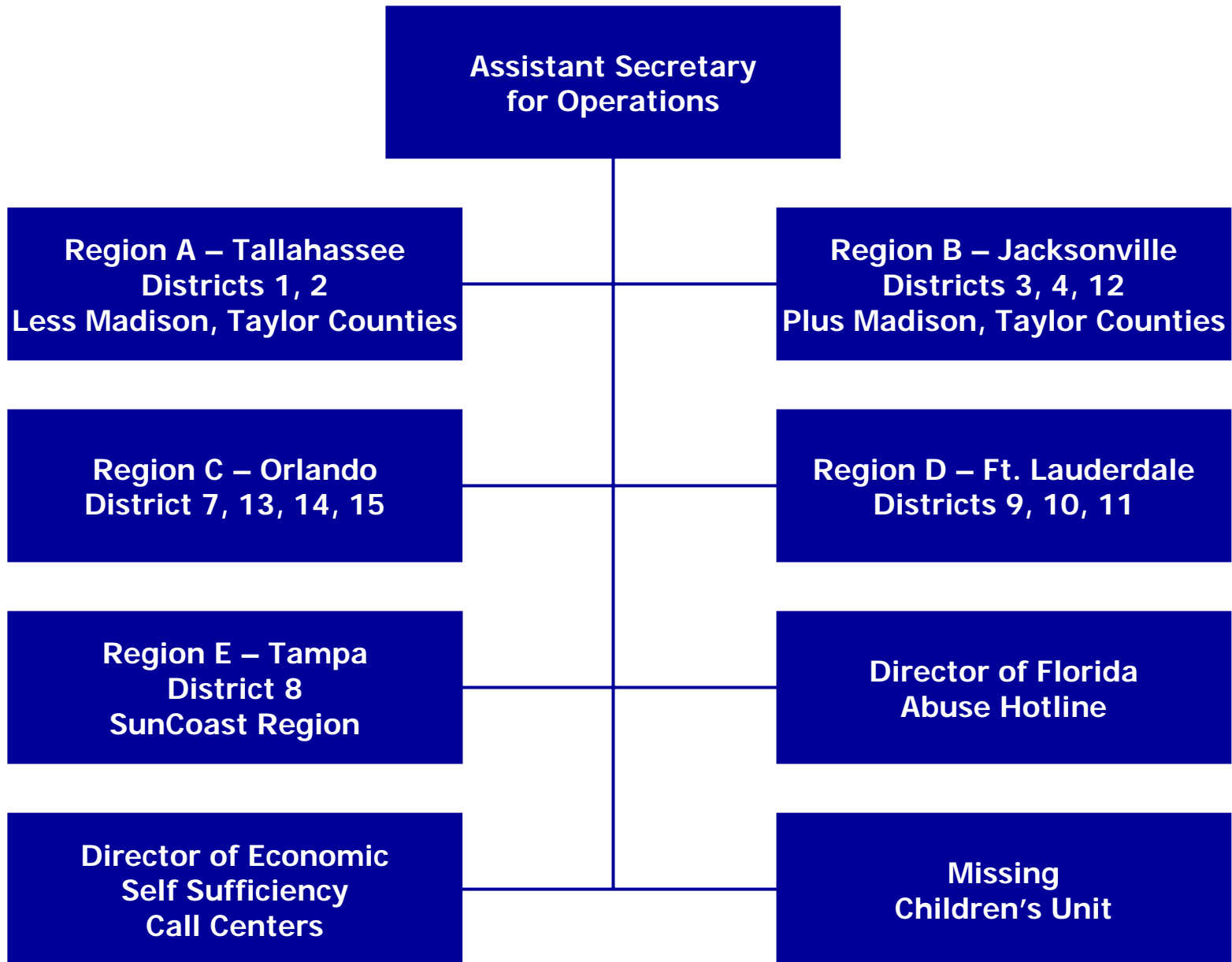
DCF Reorganization Plan

**Florida Council for
Community Mental Health**

April 12, 2007

Major Reorganization Proposals

- **Create 5 Regions: Tallahassee, Jacksonville, Orlando, Tampa, and Ft. Lauderdale.**
- **Re-establish district substance abuse and mental health services under regional operations**
- **Implement 20 Community Services Circuits - geographical areas consistent with judicial circuit boundaries**
- **Each Circuit to be headed by a Community Services Chief, who reports to the Regional Director**
- **Re-establish an Assistant Secretary for Programs (ASP)**
- **Assign SA/MH Headquarters to the ASP**
- **Assign State Hospitals to ASP**
- **Establish the Central Office Contract Management Unit within ASP**
- **Establish an Ombudsman within ASP – Provider/Stakeholder Relations**
- **Create an Office of Strategic Planning and Innovation within the Office of the Deputy Secretary.**



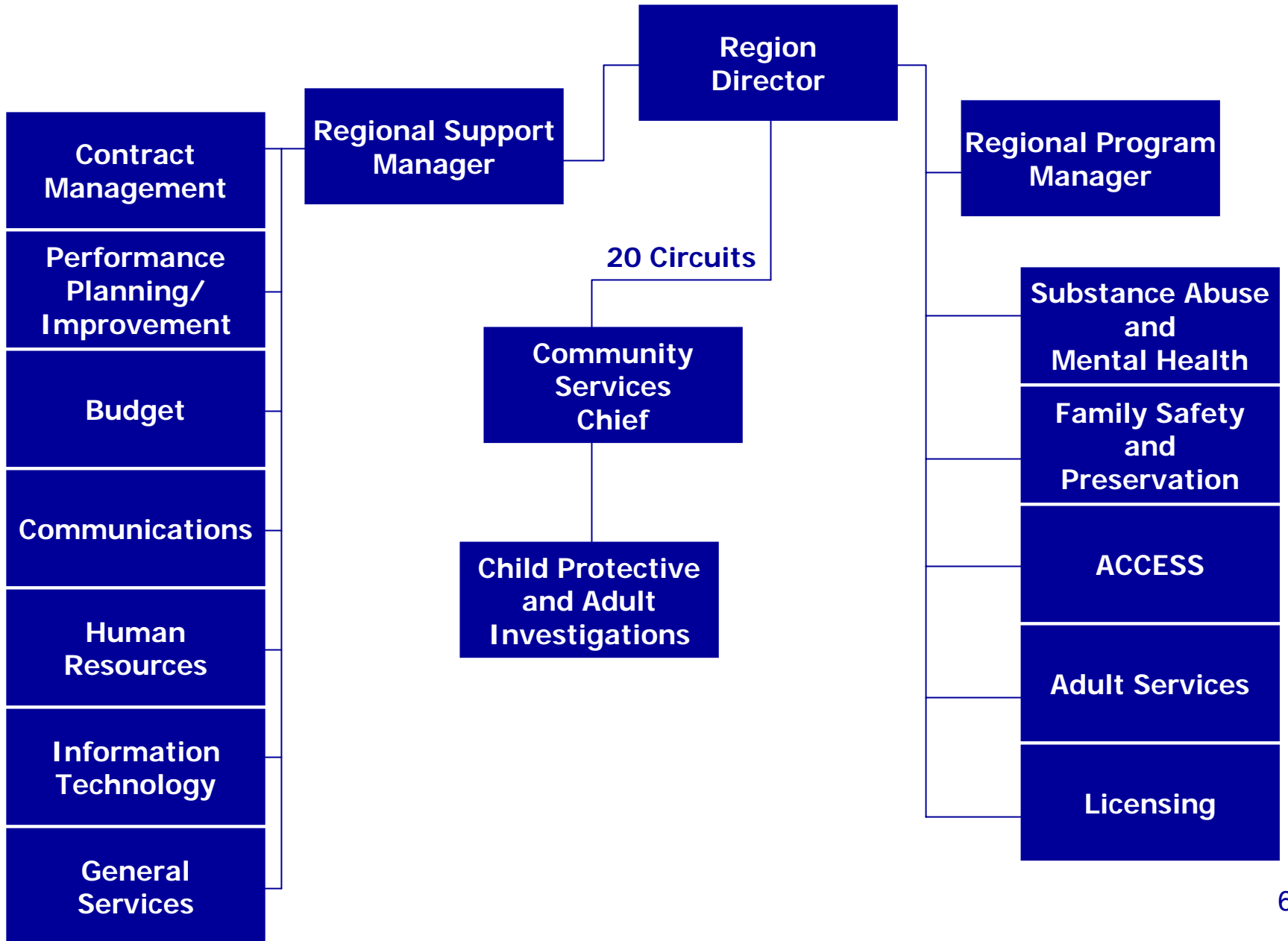
Regions/Circuits

Region	Judicial Circuit	Population by Circuit	Number of Counties
A	1	691,883	4
Tallahassee	2	387,316	6
	14	289,324	6
	Total	1,368,523	16
B	3	181,534	7
Jacksonville	4	1,122,246	3
	7	829,836	4
	8	368,394	6
	Total	2,501,929	20
C	5	960,589	5
Orlando	9	1,319,256	2
	10	676,633	3
	18	963,254	2
	19	566,812	4
	Total	4,486,544	16

Regions/Circuits

Region	Judicial Circuit	Population by Circuit	Number of Counties
D	11	2,462,104	1
Ft. Lauderdale	15	1,292,742	1
	16	83,219	1
	17	1,765,829	1
	Total	5,603,894	4
E	6	1,374,235	2
Tampa	12	721,722	3
	13	1,156,244	1
	20	1,108,631	5
	Total	4,360,778	11
TOTALS		18,321,803	67

Regional/Circuit Structure



Assistant Secretary for Programs

